



Everyone loves dressing up, whether it's for a fancy dress party or just to make games at home extra-specially fun!

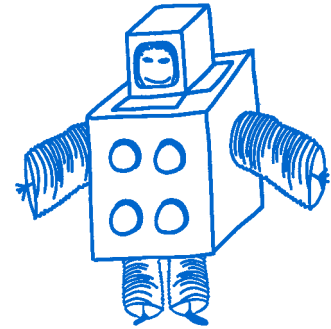
This shiny robot costume looks amazing and it's not too tricky to make. Have fun putting it all together, and you'll soon be the most realistic robot around!

Ingredients

- Glue
- Parcel or wide sticky tape
- Silver-coloured ducting or washing machine hose
- 4 paper plates
- 4 yoghurt pot lids
- String
- A belt
- Silver paint
- An old pair of Wellington boots
- Tin foil
- Two large cardboard boxes (one of these should be big enough to slide over your whole body, from shoulders to knees and the other needs to be about half as tall, slightly narrower and big enough to fit over your head)

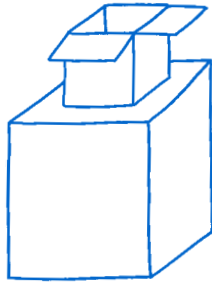
Equipment

- Pen or pencil
- Scissors
- Paintbrush

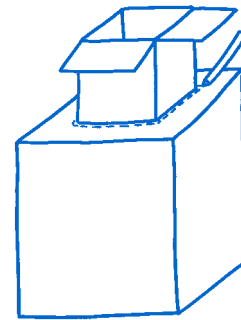


Instructions Head & Body

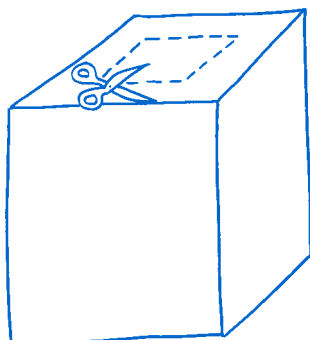
- 1 Turn the large cardboard box upside down, so it stands on the top (opening) edges and the bottom faces upwards. Rest the smaller box on top of it, checking around all four sides to make sure it's in the middle.



- 2 Draw around the small box in pencil and then take it away.

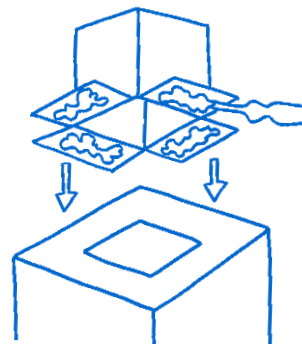


- 3 Carefully cut around the pencil line to leave a square hole in the bottom of your box. You might need to ask a grown-up to help with this bit - thick cardboard can be quite tricky to cut.



- 4 Fold the flaps at the top edge of your small box outwards. Rest the box on top of your large box again, using the flaps to help it balance over the square hole.

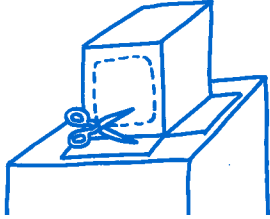
Brush glue onto the underside of each flap and press them down firmly to join the two boxes together. Use parcel tape or wide sticky tape on top to make the joins stronger.



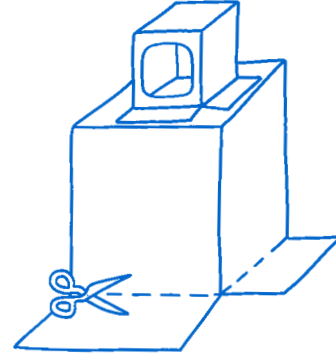
Tip:

If the flaps stick out past the edge of your large box, carefully cut them down to size.

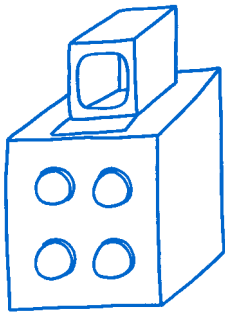
- 5** When the glue has dried, draw a square onto the front of the smaller box, and round the corners off. Cut the shape out. This will be the gap that your face peeps through when you're wearing the costume.



- 6** On the open end of your large box – the bit which is now the bottom of your robot costume – cut away the flaps.

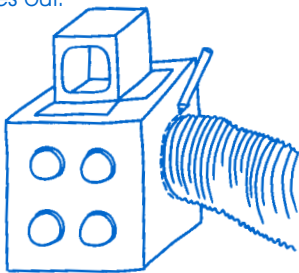


- 7** On the front of the large box, glue four yoghurt-pot lids to look like buttons on your robot's control panel.

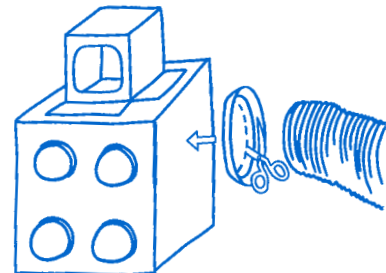


Instructions Arms

- 8** To make arms, draw around the end of a piece of ducting on the left and right sides of your large box. Cut the holes out.



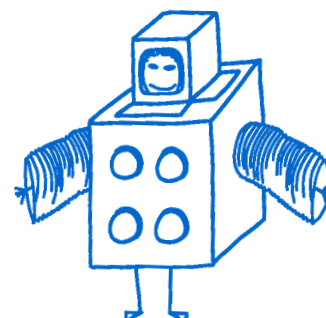
- 9** Now, draw around the ducting and cut out holes in the centre of two paper plates. Stick a paper plate around each of the arm slots you cut in step 8, so the holes line up.



- 10** Brush lots of glue around the edges of all four holes. On each side of your costume, push a piece of ducting through the plate hole and the box hole, leaving about 5cm overhanging inside the box. Squeeze more glue around the edges and leave to dry.

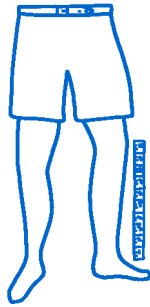


- 11** Slip the costume over your head and put your arms through the ducting. Ask a grown-up to trim the ends off level with your fingertips.



Instructions Legs

- 12** Measure your legs from just above the knee down to your ankle. Ask a grown-up to cut two pieces of ducting to this length and make two holes opposite each other in the top of both pieces.



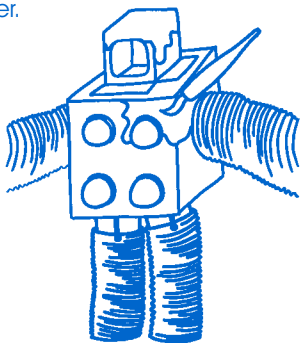
- 14** The string is going to hold the leg part of your costume up. Slide one end up through your belt and then adjust both ends of the string until the ducting is hanging at the right height (the bottom should be level with your ankle). Knot the string to hold it in this position.

- 16** To match your feet to your robot legs, paint an old pair of wellington boots silver. If you haven't got old wellies, shoes or trainers will do instead, or for a temporary version, try wrapping tin foil around wellingtons and sticking the edges in place with tape.



Instructions Decorating

- 17** Paint your whole robot costume with silver paint. It might take two or three coats to cover the cardboard boxes, but you won't need to paint the ducting if it's already silver.



- 18** For a final finishing touch, scrunch up some silver foil and then smooth it flat again before sticking in the centre of your yoghurt lid control panel buttons.

- 13** Put a belt around your waist – nobody will be able to see this under your costume, so it doesn't matter what it looks like. Slip the ducting onto your legs and thread a piece of string through one of the holes.



- 15** Tie string through all four holes in the same way, so the ducting legs are held up by your belt. You can take them off again, just by undoing your belt and slipping the strings off.



TOP TIP:

You can find stretchy ducting tubes or washing machine hoses in big DIY shops, but don't worry if you can't get hold of them. Instead, use an old long-sleeved top and a pair of trousers that you don't wear any more and paint them silver to match the rest of your costume. The holes you cut in the side of the box just need to be big enough for your arms to fit through and after the paint has dried, you can just wear the trousers as you normally would.

! Make sure you check with a grown-up before you start painting clothes, even if they are old ones.